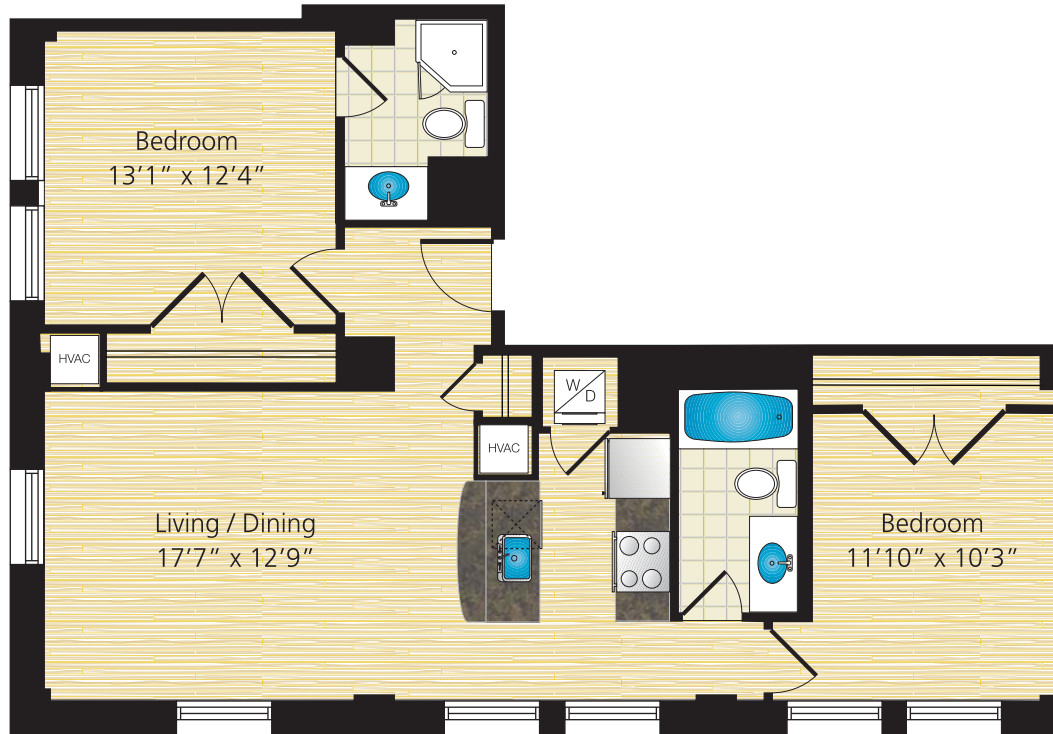
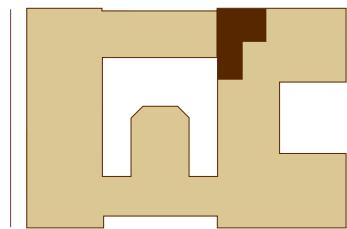


STYLE: B (1,025 SQ. FT.)
ROOMS: 2 BEDROOM / 2 BATH
RENT: \$ / MONTH



WOODWARD
BUILDING



P: 202.347.7555 F: 202.347.8555 733 FIFTEENTH STREET, NW
WWW.WOODWARDBUILDING.COM WASHINGTON, DC 20005



Our policy of continual improvements in design and construction requires that all specifications, equipment, dimensions, square footages and floor plans remain subject to change.